



About us

2015

Founded

20+

Countries

300+

World's top schools

**Orah helps the top independent schools
meet and exceed their duty of care.**



What Duty of Care means to us

At Orah, Duty of Care means making sure students are accounted for, both physically and mentally. It's all about helping schools to create a secure and supportive environment.



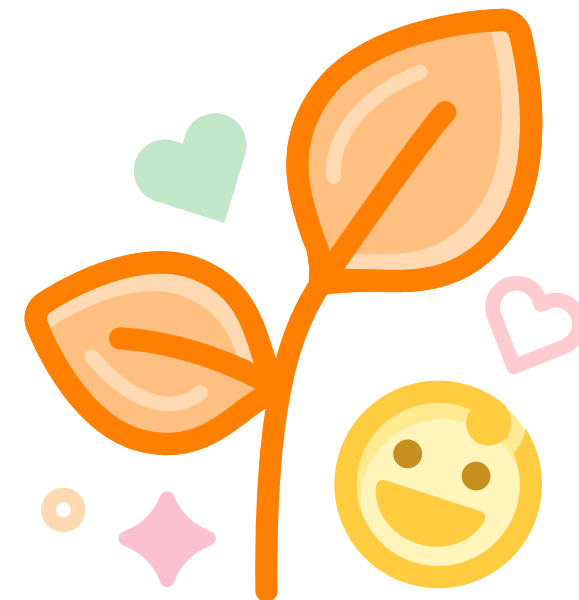
Pillars of Duty of Care

Attendance



Where are my students?

Wellbeing



How are they?

Communication

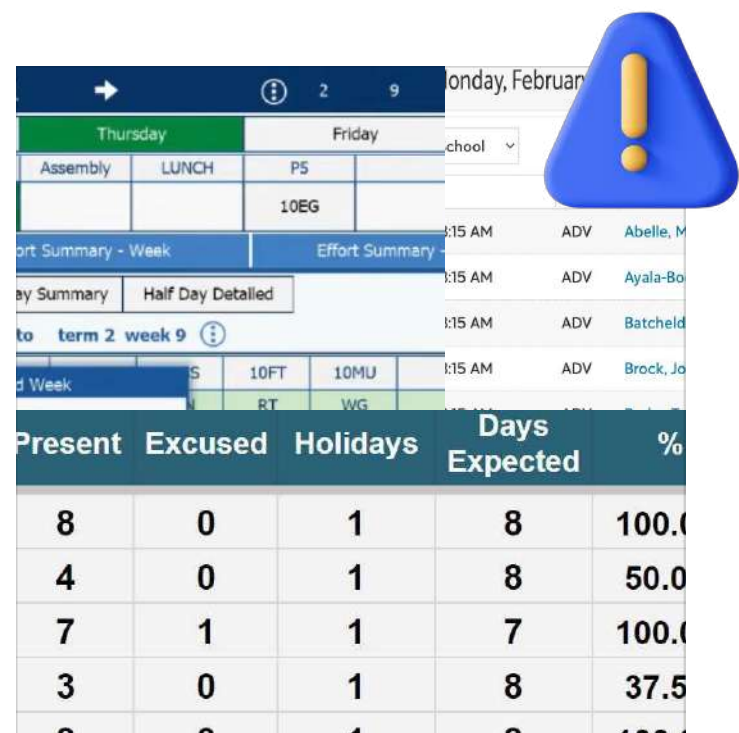


How do we communicate with them?



What's New
Knowing where your
students are in
real time

Pains with existing solutions



Clunky, hard to use tools



Multiple systems to tracking student location and attendance

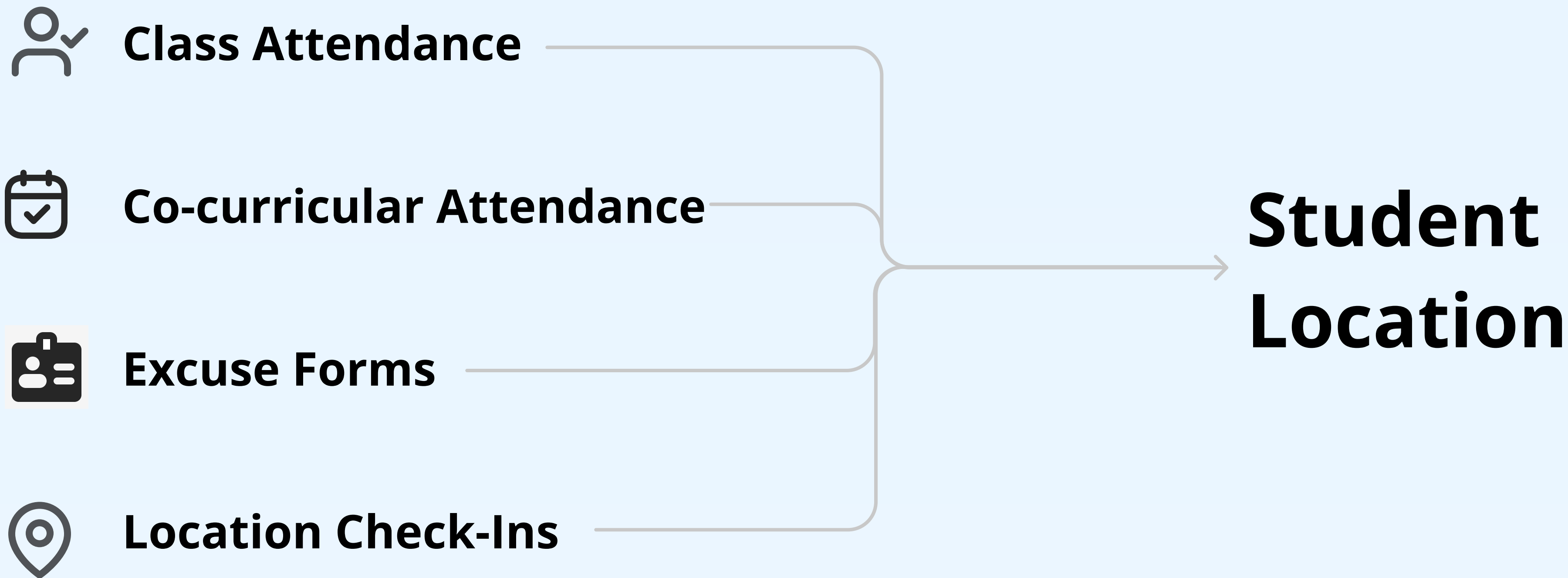


Manual data entry leading to inaccurate or lagging data

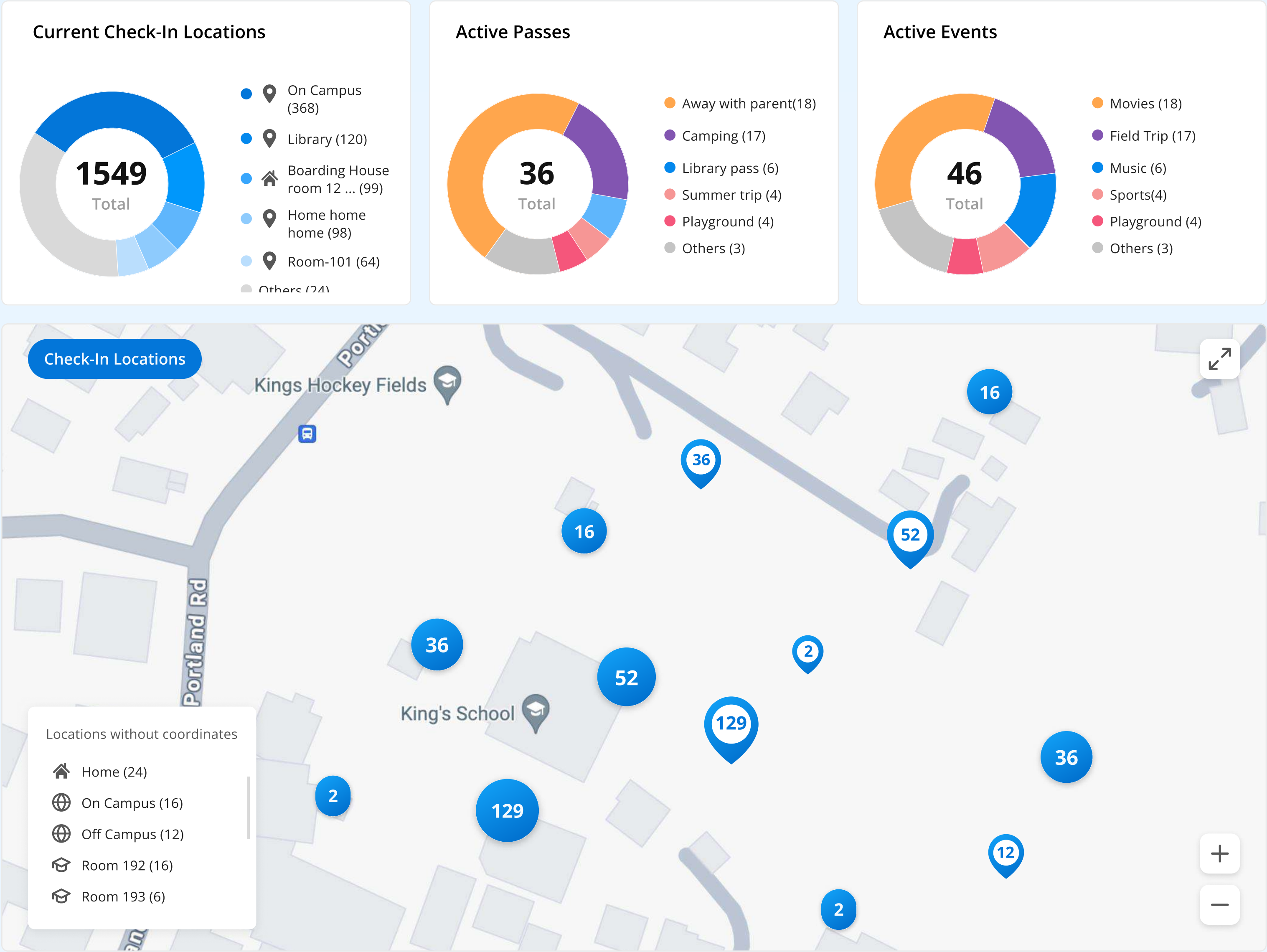


No real-time understanding of where students are

Updating Student Location



New: Location Overview



Deep integrations with your SIS



Get started with Orah Attendance

kurt@orah.com