



What Duty of Care means to us

At Orah, Duty of Care means making sure students are accounted for, both physically and mentally. It's all about helping schools to create a secure and supportive environment.



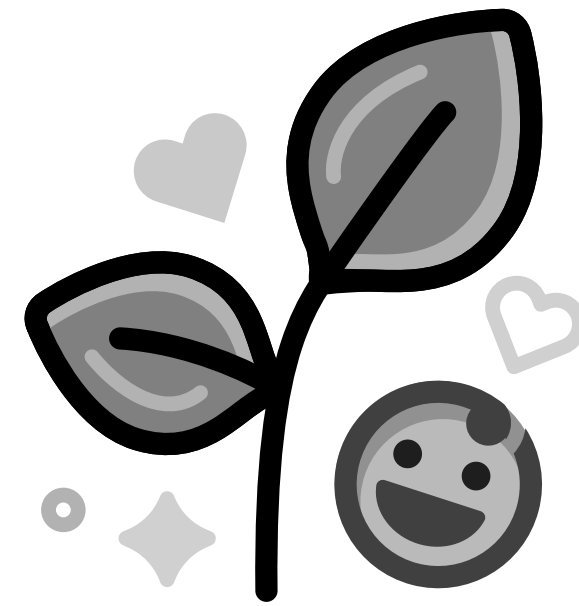
The pillars of Duty of Care

Attendance



Where are my students?

Wellbeing



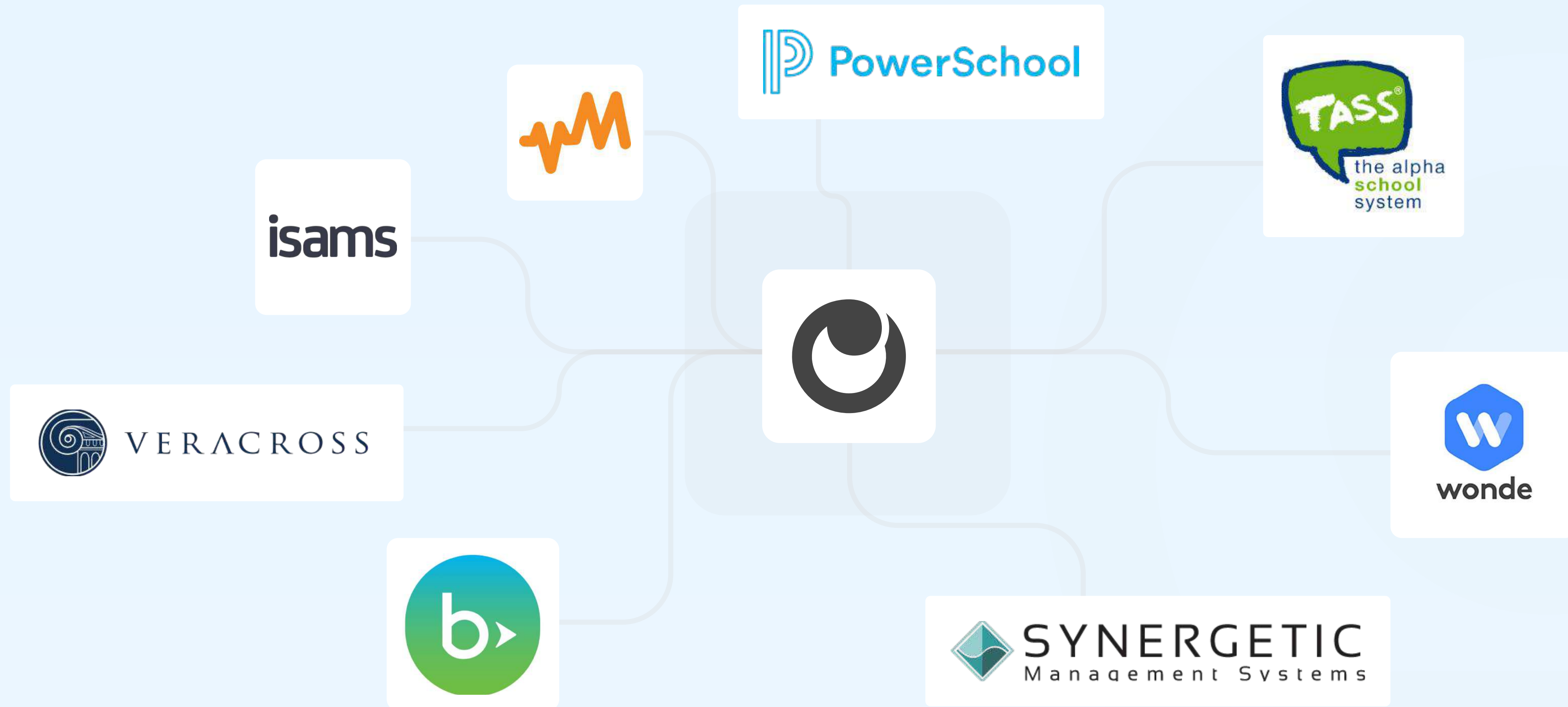
How are they?

Communication



How do we communicate with them?

Seamless integration with your SIS





**How to improve your
attendance rate
with Orah in 30 days.**

What is Attendance Rate?

A measure of student presence in school that reflects engagement and is used to identify students who may need additional support to succeed academically.

$$\frac{\text{CLASSES or DAYS Attended}}{\text{CLASSES or DAYS Expected}} \times 100$$

Typically, 90% is considered the minimum acceptable attendance rate before students are viewed as being at risk.

Why tracking your Attendance Rate matters

Attendance is an indicator of student mental health.

Study showed that students with mental health issues such as anxiety, had **2x** the number of absences as students without mental health issues.

David Lawrence,
Professor of Mental
Health

Attendance is correlated to educational success.

Students who attend school regularly are **1.7** times more likely to achieve proficiency in core subjects such as math and reading compared to their counterparts with irregular attendance.

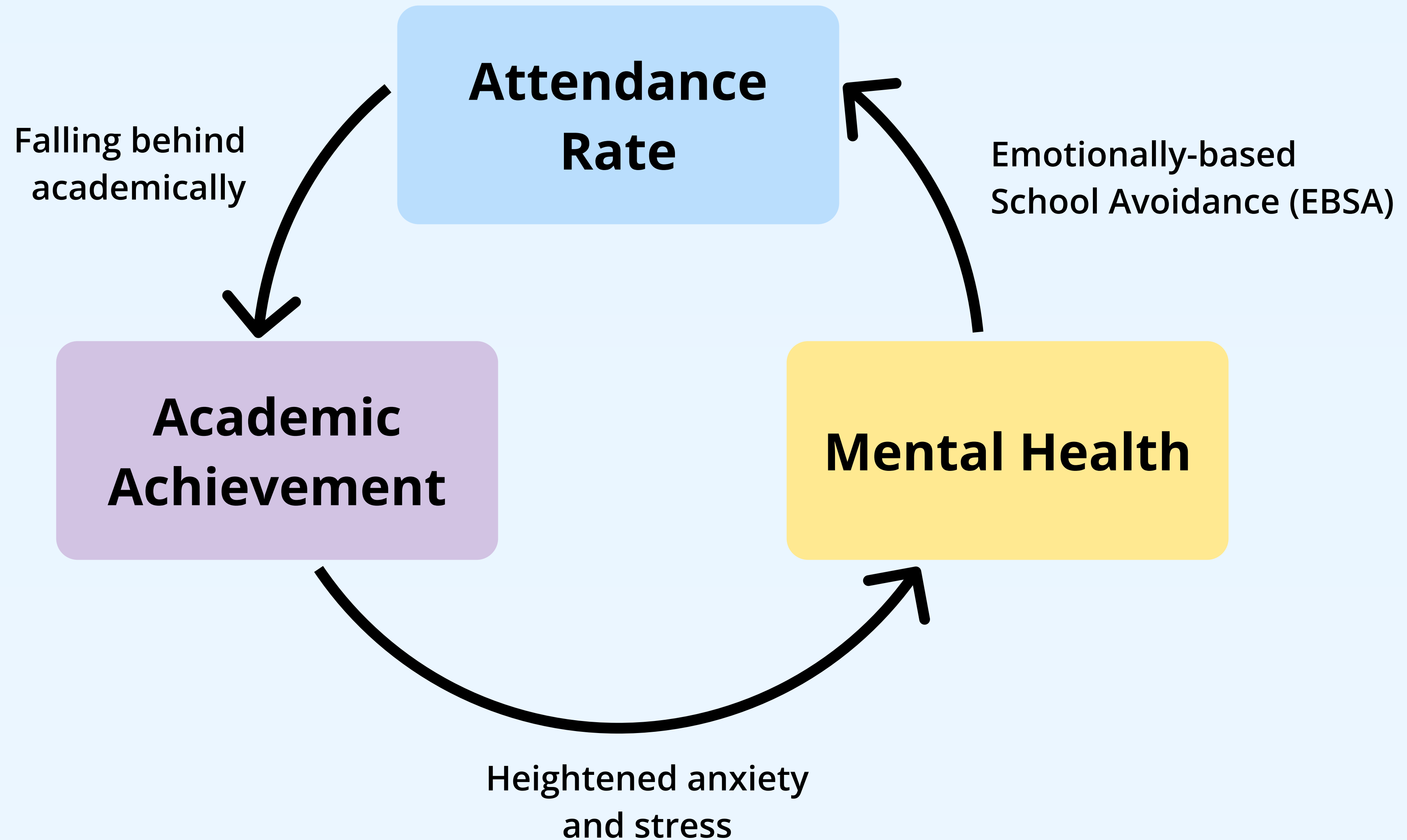
U.S. Dpt of Education

Families do not receive value for their investment if their child is not at school.

Based on the average private school tuition and enrolment. A 10% absence rate would add up to **\$1.3M** of unused school fees per year.

AU School Averages

The Doom Loop of Absenteeism



Strategies to identify and disrupt absenteeism

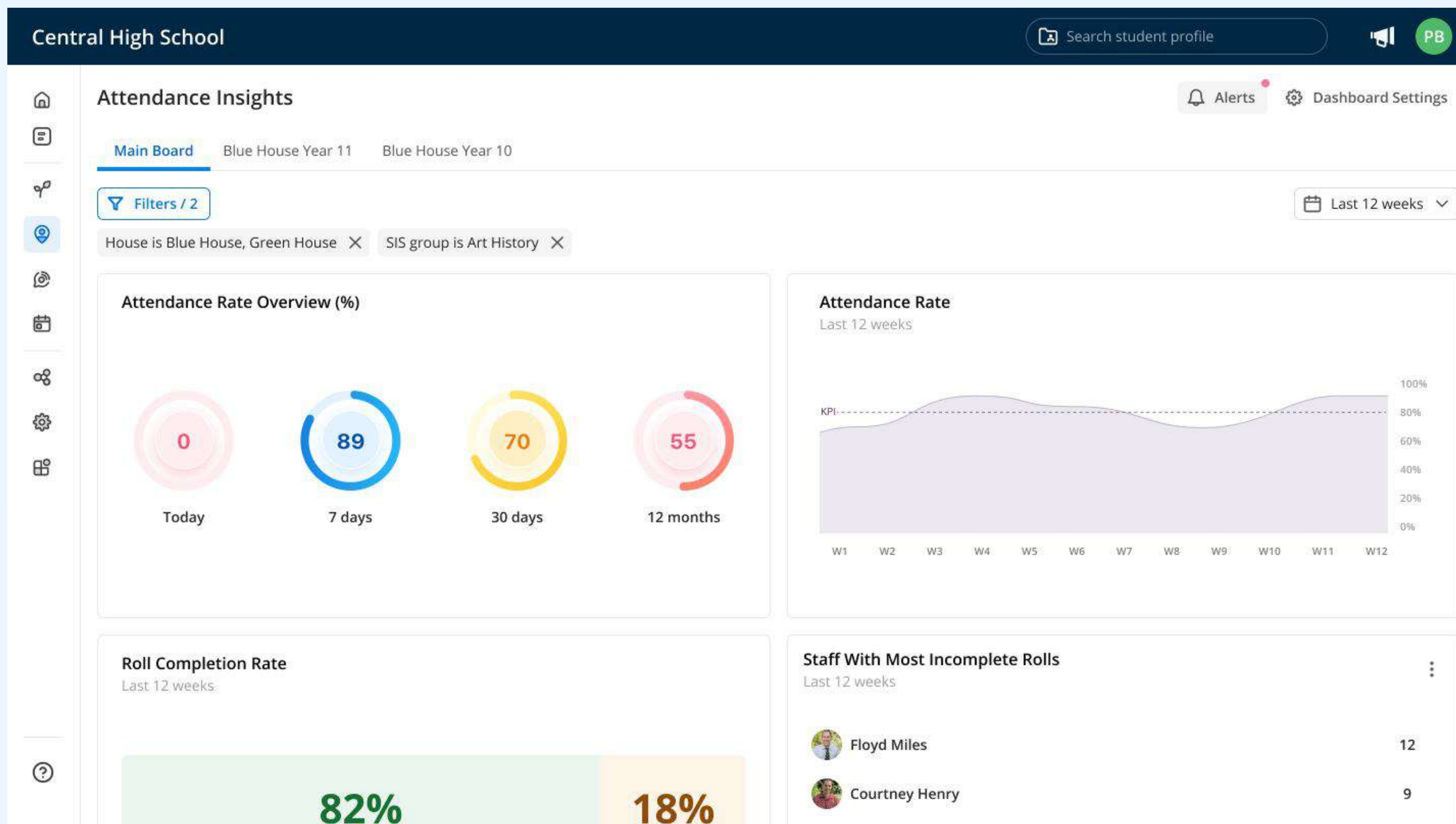
1. Socialise your attendance data

2. Identify early signs of absenteeism

3. Engage quickly and proactively

4. Continue to monitor and support students

Visualise and socialise your attendance data with Orah's Attendance Insights Dashboard.



Design advanced alerts to notify the right people to take early action.

Alert History

↓↑ Sent Time Roll Code Type ▾

	Cody Fisher	Absence x 5	in total within 30 days, alerted Staff Sam, Leader L
	Robert Fox	Late x 3	in a row within 3 weeks, alerted Staff Sam, Leader Laur
	Jerome Bell	Absence x 5	in total within 30 days, alerted Staff Sam
	James Frame	Late x 3	in a row within 3 weeks, alerted Josh Fox
	Simon Kogan	Late x 3	in a row within 3 weeks, alerted Simon Mother
	Jerome Bell	Absence x 5	in total within 30 days, alerted Jerome Mother
	Robert Fox	Late x 3	in a row within 3 weeks, alerted Staff Sam, Leader Laur
	Esther Howard	Late x 3	in a row within 3 weeks, alerted Staff Sam, Leader
	Kathryn Murphy	Late x 3	in a row within 3 weeks, alerted Staff Sam
	Jerome Bell	Absence x 3	in total within 1 day, alerted Staff Sam

Show More ▾

Alert

When students are Absent, Absent-unexcused or Tardy for any course 3 times in total within 20th Jun 2024 - 20th Jun 2025 ,

send alert to

Students Contacts of students Staff

Specific Staff Any assigned Staff Staff by User Role

Leader Laura X

These staff members will be alerted regardless of their assigned students.

Email Push

Write a message...

Delete Cancel Save

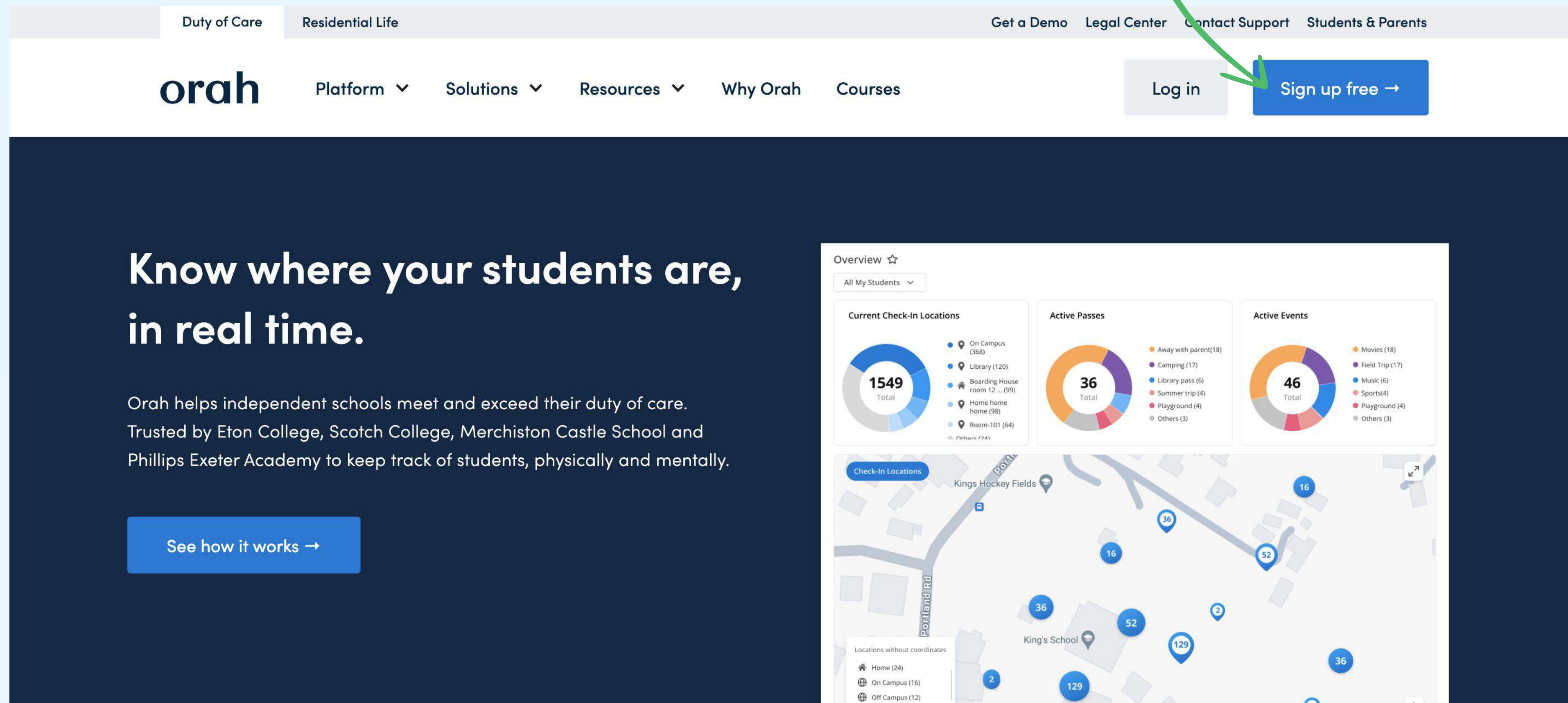
🕒 2:40pm 20th Feb 2024

Collaborate with other faculty and staff members to continue to support students.

The screenshot displays the St. James School Orah Nurture web interface. The main header includes the school name, a search bar, and a user profile icon. The left sidebar contains navigation options for 'Behaviour', 'Behaviour Settings', and 'Behaviour Records'. A 'Welcome Jason!' message is visible at the top of the main content area. A 'Create Behaviour Note' modal is open in the center, featuring a search bar for students, a category dropdown set to 'General', a rich text editor with formatting options (bold, italic, underline, list, link), and a 'Save' button. A date and time stamp '20th Jun 2023, 2:40pm' is shown at the bottom of the modal. On the right side, a sidebar for 'Orah Nurture' shows a user selection dropdown with 'Jane Doe' selected, a category dropdown set to 'General', a text input field for notes, and a date/time stamp. At the bottom of this sidebar, there are buttons for 'Open Orah App', 'Cancel', and 'Save'. The background shows a list of behaviour records with columns for student names, dates, and descriptions.

Get started now

- Create an account on our website
- Connect your SIS (Blackbaud, Veracross)



The screenshot displays the Orah website interface. At the top, there is a navigation bar with links for 'Duty of Care', 'Residential Life', 'Get a Demo', 'Legal Center', 'Contact Support', and 'Students & Parents'. Below this is a secondary navigation bar with the 'orah' logo and links for 'Platform', 'Solutions', 'Resources', 'Why Orah', and 'Courses'. On the right side of this bar are 'Log in' and 'Sign up free →' buttons, with a green arrow pointing to the 'Sign up free' button. The main content area features a dark blue background with the text 'Know where your students are, in real time.' and a sub-headline 'Orah helps independent schools meet and exceed their duty of care. Trusted by Eton College, Scotch College, Merchiston Castle School and Phillips Exeter Academy to keep track of students, physically and mentally.' A blue button labeled 'See how it works →' is positioned below the text. To the right, a dashboard titled 'Overview' provides a real-time view of student data. It includes three donut charts: 'Current Check-In Locations' (Total: 1549), 'Active Passes' (Total: 36), and 'Active Events' (Total: 46). Below these charts is a map showing student locations with numbered pins. A legend at the bottom left of the map lists 'Locations without coordinates' with counts for Home (24), On Campus (16), and Off Campus (12).

Know where your students are, in real time.

Orah helps independent schools meet and exceed their duty of care. Trusted by Eton College, Scotch College, Merchiston Castle School and Phillips Exeter Academy to keep track of students, physically and mentally.

[See how it works →](#)

Overview ☆

All My Students ▾

Current Check-In Locations

1549 Total

- On Campus (368)
- Library (120)
- Boarding House room 12... (99)
- Home home home (98)
- Room-101 (64)
- Others (24)

Active Passes

36 Total

- Away with parent(18)
- Camping (17)
- Library pass (6)
- Summer trip (4)
- Playground (4)
- Others (3)

Active Events

46 Total

- Movies (18)
- Field Trip (17)
- Music (6)
- Sports(4)
- Playground (4)
- Others (3)

Check-In Locations

Locations without coordinates

- Home (24)
- On Campus (16)
- Off Campus (12)

Schedule a deep dive

kurt@orah.com

Or, respond to our follow up email